

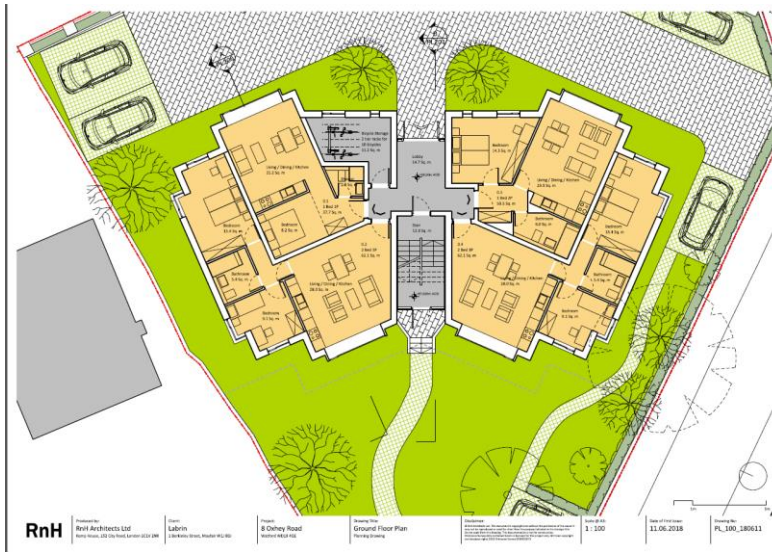
1 - Aerial view of site



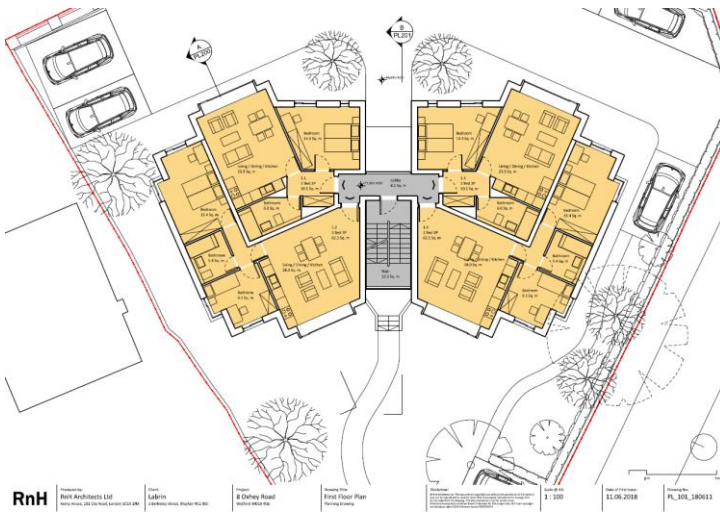
2 - Street view



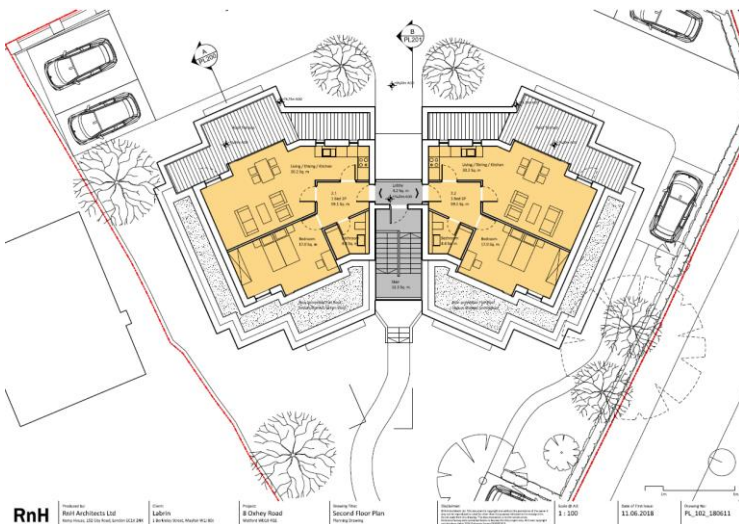
### 3 - Proposed ground floor plan



### 4 - Proposed first floor plan



### 5 - Proposed second floor plan





## 6 - Contextual Street View



**RnH** Proprietor: RnH Architects Ltd, 1000 Hwy 101, Suite 101, Oakville, ON L6M 4K1  
Client: Labrite, 1000 Hwy 101, Suite 101, Oakville, ON L6M 4K1  
Project: 8 Oakley Road, Oakley Road, Oakley Road  
Project Title: Contextual Elevation - Oakley Road, Oakley Road  
Scale: 1:1,250  
Date of this issue: 21.06.2018  
Drawing No.: PL\_210\_180611

## 7 - CGI Image



## 8 - CGI Image 2



9 - CGI Image 3

